



Shower traps  
+ other traps



01	Introduction	Page 05
02	Shower traps	Page 09
03	Traps	Page 17
04	Product range	Page 31
05	Cleaning	Page 51
06	Service	Page 54



# 01

Introduction

Page 05



“We are an innovative company – but we're also one big family.”

Harry Bauermeister,  
Managing Director

The Dallmer family business is now in its fourth generation. And even if over the decades times have changed drastically, and along with it the production processes, one thing has remained the same: All Dallmer products are developed, designed and manufactured using state-of-the-art technology in Germany – more specifically, in Arnsberg. The “Made in Germany” seal of quality applies without reservations.

Investing in the future. Dallmer does not only invest money in state-of-the-art machine technology, but also in training and further education for its employees. This ensures that there is specialist know-how at the location.

Bringing together strengths. In order to produce drainage solutions which set standards, you need a genuine innovative spirit and a high degree of experience – and state-of-the-art technology.

Every detail counts. Quality is our top priority. If we all work towards this same goal, we are capable of meeting even the highest demands.



Headquarters in  
Arnsberg

Production and  
storage rooms



1913





# 02

Shower traps

Page 09

# Shower traps: Classic shower drainage

State-of-the-art  
drainage technology

Straightforward, quick  
and reliable

ORIO was designed for flat shower trays with a Ø 90 mm outlet. Alongside the standard version, the range also includes ORIO 60 with a low build-in height and ORIO V with a vertical outlet, which can be additionally combined with fire protection. There are also beautifully formed cover plates that lie flush so that the tub and drain look like they are cast from a single piece.

The new ORIO DallBox shower trap – a further development of the proven ORIO systems – now offers a sealing sleeve with a flex element. This brings multiple advantages for maintenance as well as rework and adjustment options.

The ORIO DallBox is suitable for shower trays which are in direct contact with the screed, i.e. without a frame. A solution which makes things easy, fast and reliable for planners working in commercial construction. The new, elastic Flex element is the central component of the shower trap. It offsets deviations at the sides caused by dimensional inaccuracies between the drain body and the shower tray by up to 2 cm from the centre in any horizontal direction. Thanks to the click mechanism, the Flex element can be clicked into the screw valve plus union nut, rendering the system both tight and secure. We supply all the items you need ready for installation in a practical complete set. The packaging of the ORIO DallBox shower trap from Dallmer is designed with the respective construction phases in mind. As such, the interfaces between the trades are clearly defined and coordination is easier.

By popular demand, the housing and cover plates can be ordered separately; in addition to classic polished stainless steel hoods, we also have white, black and chrome-plated hoods in the range. The ORIO Select shower traps are another striking feature in this product area.

Discover the ORIO shower traps:  
[dallmer.com/oriodallbox](http://dallmer.com/oriodallbox)



**What else might interest you:** Every development starts with an idea: The DallFlex system from Dallmer separated the shower channel from the drain for the first time, providing flexible installation options for level-access showers. Different shower channels can also be built on one and the same drain body.

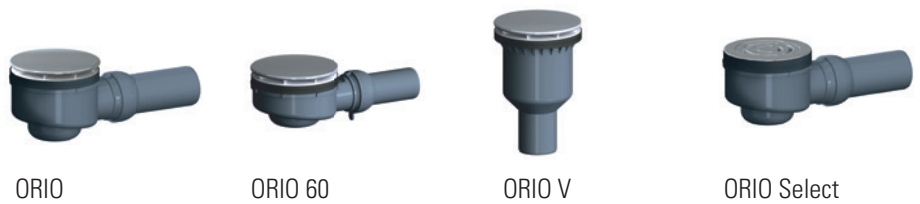
Discover the DallFlex system:  
[dallmer.com/dallflex](http://dallmer.com/dallflex)



ORIO DallBox  
Black satin



Variants



ORIO

ORIO 60

ORIO V

ORIO Select

Material

Polypropylene drain body, highly impact-resistant

Cover plates

Stainless steel / chrome-plated plastic / white plastic / white satin plastic / black satin plastic

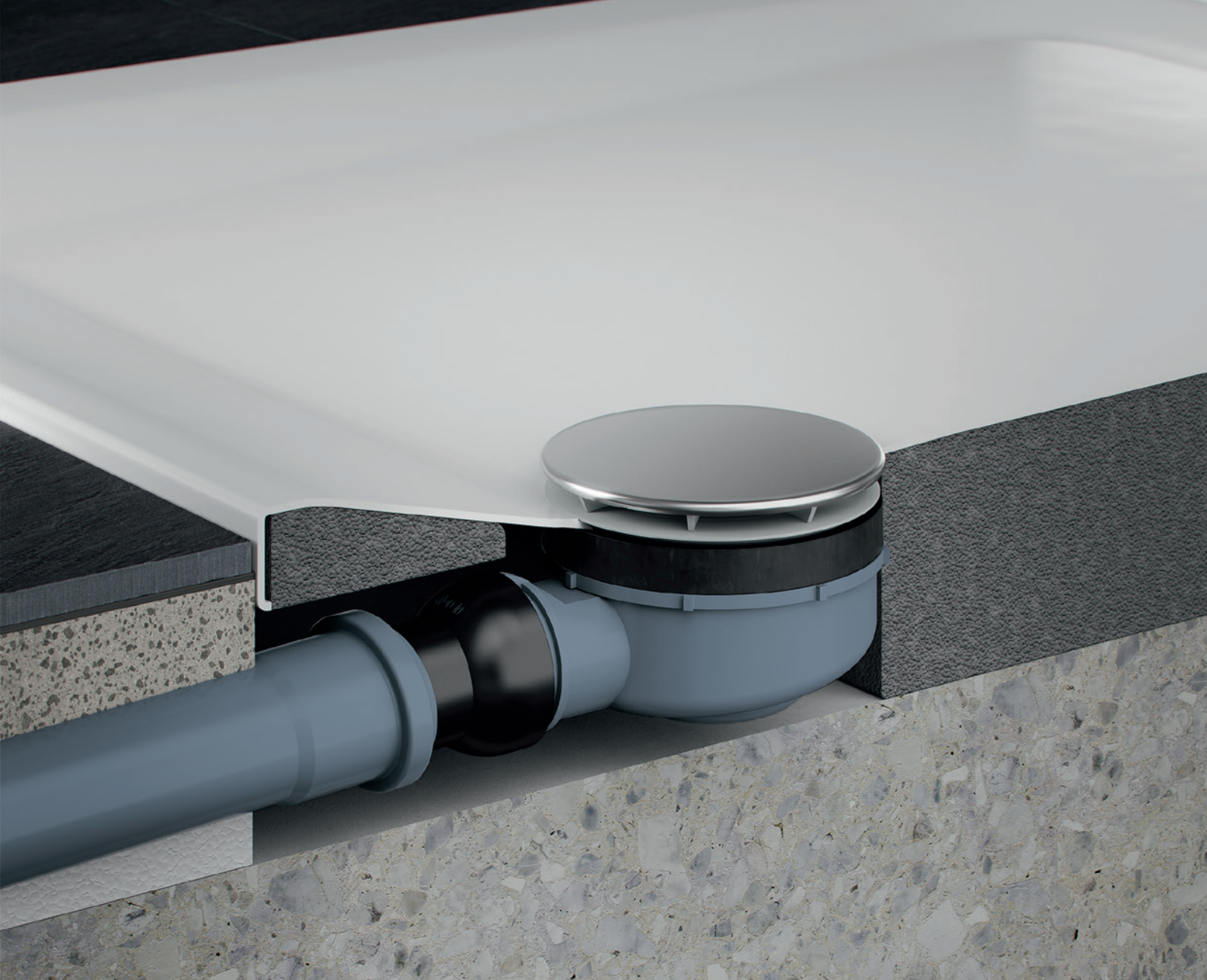
Build-in height

60 mm (ORIO 60) / 85 mm (ORIO) / 63 mm (ORIO 60 Select) / 87 mm (ORIO Select)

Flow rates

0.42 l/s – 0.51 l/s\*

\*Depending on drain version



- ① Cover plate with 8 anchorages – secure fit, non-slip and easy to remove
- ② Easy-to-remove trap insert for quick cleaning; easy access to wastewater pipe
- ③ The screw valve is suitable for shower trays with outlet diameter of Ø 90 mm
- ④ Outlet can be adjusted through 0 – 15° for stress-free assembly

## Advantages

- Great creative scope: Design accents can be created with the coloured ORIO cover plates and the ORIO Select versions
- As well as our classic ORIO, we also offer the ORIO 60 for extremely shallow shower trays
- The ORIO V Vertical version can be equipped with a fire protection element for sealing off floor penetrations
- The ORIO, ORIO 60 and ORIO V are also available in the premium Select versions with solid design grate made of polished or matt-satinised stainless steel
- Tool-free installation using the supplied installation key

Product information:  
[dallmer.com/orio](http://dallmer.com/orio)



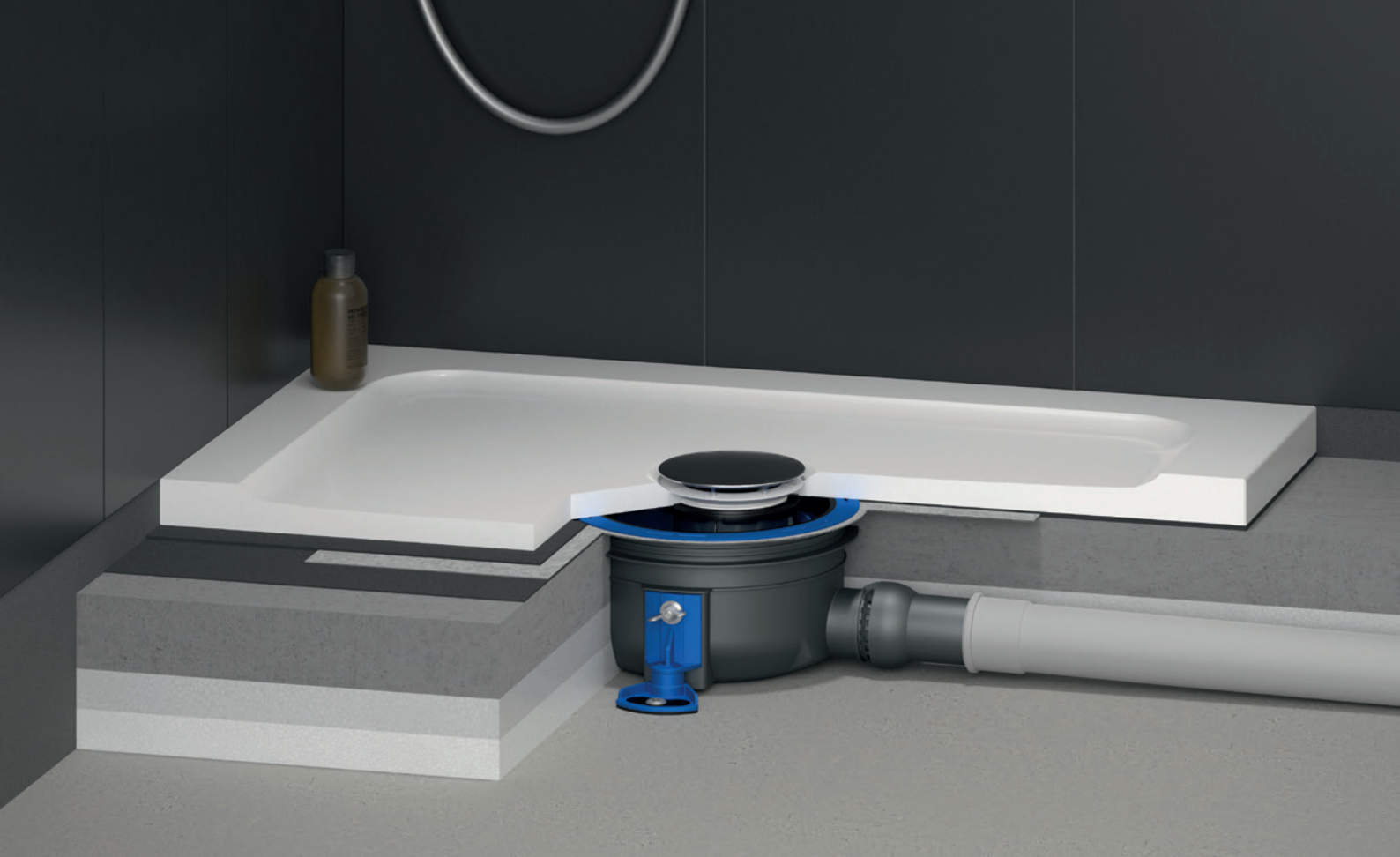


Material Polypropylene drain body, highly impact-resistant; TPE flex element

Cover plates Stainless steel, satin or polished / chrome-plated plastic / white satin plastic / black satin plastic

Build-in height 80 – 250 mm

Flow rates 0.45 l/s



## Advantages

- ① Cover plate in stainless steel or chrome-plated plastic
- ② Easy-to-remove, two-piece trap for fast cleaning and to guarantee optimum hygiene; free access to wastewater pipe, sealing water height 50 mm (conforming to DIN EN 1253)
- ③ Screw valve for shower trays with an outlet diameter of 90 mm
- ④ Flexible, crease-free, click-in sealing sleeve for secure connection to bonded waterproofing conforming to DIN 18534
- ⑤ Elastic flex element
- ⑥ Drain body can be cut to length for build-in height of 80 – 250 mm
- ⑦ Moving outlet for straightforward, tension-free installation
- ⑧ Acoustically decoupled, height-adjustable mounting feet

Perfect maintenance and inspection options: Moisture build-up underneath the shower tray can be checked simply by releasing the click connection between the screw valve and the Flex element, and any moisture is directed into the drain body and discharged through the connection line.

- Compensation for inaccurate measurements: Between the drain body and the outlet of the shower tray, up to 2 cm in any horizontal direction
- Clear interface between trades
- Efficiency and planning security
- Straightforward height setting
- Practical complete package
- The ORIO DallBox is also available in the premium Select versions with solid design grate made of matt-satinised stainless steel

Installation video:  
[dallmer.com/oriodallbox](http://dallmer.com/oriodallbox)







Traps

Page 17

03

# Traps:

## Constant performance, flexible forms

Innovative technology and understandable benefits

As the element that prevents sewer gases from entering the room from the wastewater pipe, traps are an integral part of drainage technology. To achieve this, they are fitted with a so-called sealing water that seals the pipe by retaining a small amount of water in the U-bend of the trap. This permits water to move through the pipe (the retained water is constantly replaced by the newly flowing water), but gases and smells are prevented from entering the room.

Traps are used in various areas of a building installation, such as the kitchen or the bathroom, and – depending on their design – fall into different categories. Dallmer produces traps for urinals, washing machines, washbasins, vanity units, sinks, air conditioning units, condensing boilers and more in wall-mounted, surface-mounted and air-admittance trap designs.

A true collection of originals

Since we brought the first washing machine traps for wall installation to market in 1995, they have been chosen over and over again. Fitters depend on quality from original manufacturers, and with Dallmer they know they can rely on straightforward assembly and standards-compliant technology.

Discover Dallmer traps:  
[dallmer.com/traps](https://dallmer.com/traps)



**Something else you might be interested in:** Air-admittance valves from Dallmer – mechanical valves that compensate for the pressure in the pipe system. They prevent the trap being sucked dry, which would enable sewer gases to enter the room.

Discover the Dallmer air-admittance valves:  
[dallmer.com/air-admittance-valves](https://dallmer.com/air-admittance-valves)



Vanity unit trap 137

# Traps

## Concealed traps for washing appliances



HL 400

Page 22



HL 400 E

Page 22



406

Page 22



406 E

Page 22



405

Page 22



405 E

Page 22



400 VARIO.1

Page 22



400 VARIO.2

Page 22

## Concealed traps for washbasins



300

Page 24



310

Page 24

## Vanity unit trap



137

Page 26

## Condensate traps / traps for air-conditioners



Condensate trap 113 Page 28



Condensate trap 21 Page 28



Concealed condensate traps  
138 Page 28



Condensate trap  
136 Page 28



Condensate trap  
136.2 Page 28

# Concealed traps for washing appliances



## Variants



Material	Trap housing in polyethylene, weldable
Installation depth	60 – 120 mm*
Flow rate	0.38 l/s
Mark of conformity	P-IX 007 / I, DVGW- / SVGW-certified, Belgaqua (fitting); VDE (electrical connection)

\*Depending on the version



- ① Sound-absorbing backing plate
- ② Leifeld mounting rail
- ③ A protection box serves as the wall cladding; can be shortened after shell construction for installation depths of 73 – 120 mm
- ④ Small aerodynamic housing, aerodynamic drain body
- ⑤ High-quality stainless steel cover plate (polished)

## Advantages

Wall-installation washing machine traps offer very convenient connection for washing machines and dishwashers. In the models with water inlet, a sound-insulating backing plate prevents noise being transferred to the building. The Vario model for connecting up to two devices has a modular structure for more flexibility during final installation.

- Time-saving installation of water supply and water drainage in one assembly step
- Standards-compliant original COMFORT SCHELL appliance combination angle valve with return flow preventer and air-admittance valve
- 405 E and 406 E versions with original Jung electrical connection with cover flap, e.g. for washing machines, protection class IP 20

Product information:  
[dallmer.com/traps](http://dallmer.com/traps)



# Concealed traps for washbasins

Product range page 44



## Variants



## Material

Trap body in polypropylene, highly impact-resistant; polypropylene elbow connection in white (KS), or brass, chrome-plated (CR); ABS cover rosette in white (KS), or stainless steel (CR)\*

\*Depending on the version





- ① Height-adjustable elbow connector
- ② Cover rosette
- ③ Trap housing
- ④ Leifeld mounting rail

## Advantages

- Small aerodynamic housing
- Elbow connector that can be cut to length for adaptation to the washbasin
- Removable trap insert for easy maintenance
- Sound-absorbing backing plate in the 310 version

Product information:  
[dallmer.com/traps](http://dallmer.com/traps)



# Vanity unit trap

Product range page 43



Material

Polypropylene, highly impact-resistant

Flow rate

0.7 l/s



- ① Swivel joint
- ② Removable cleaning insert
- ③ Threaded extension

## Advantages

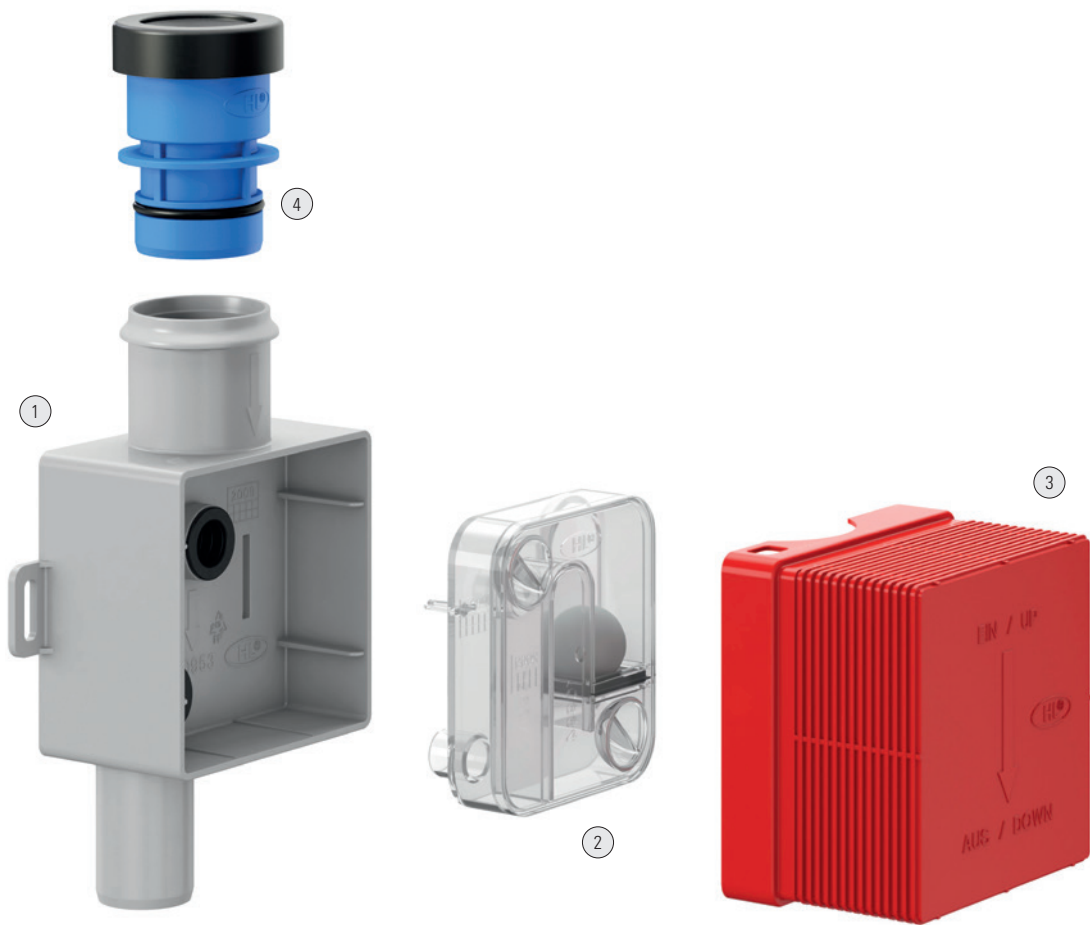
The vanity unit trap 137 is extremely space-saving thanks to infinitely variable pivot points.

- Adjustable waste bend for more flexibility under the vanity unit
- Removable cleaning insert for easy maintenance
- Specifically for washbasin substructures
- Suitable for wheelchair accessible washstands in barrier-free bathrooms
- Distance compensation possible with threaded extension for countertop washbasin

Product information:  
[dallmer.com/traps](https://dallmer.com/traps)



# Condensate traps / traps for air-conditioners



Condensate trap 113



Condensate trap 21



Condensate trap 138



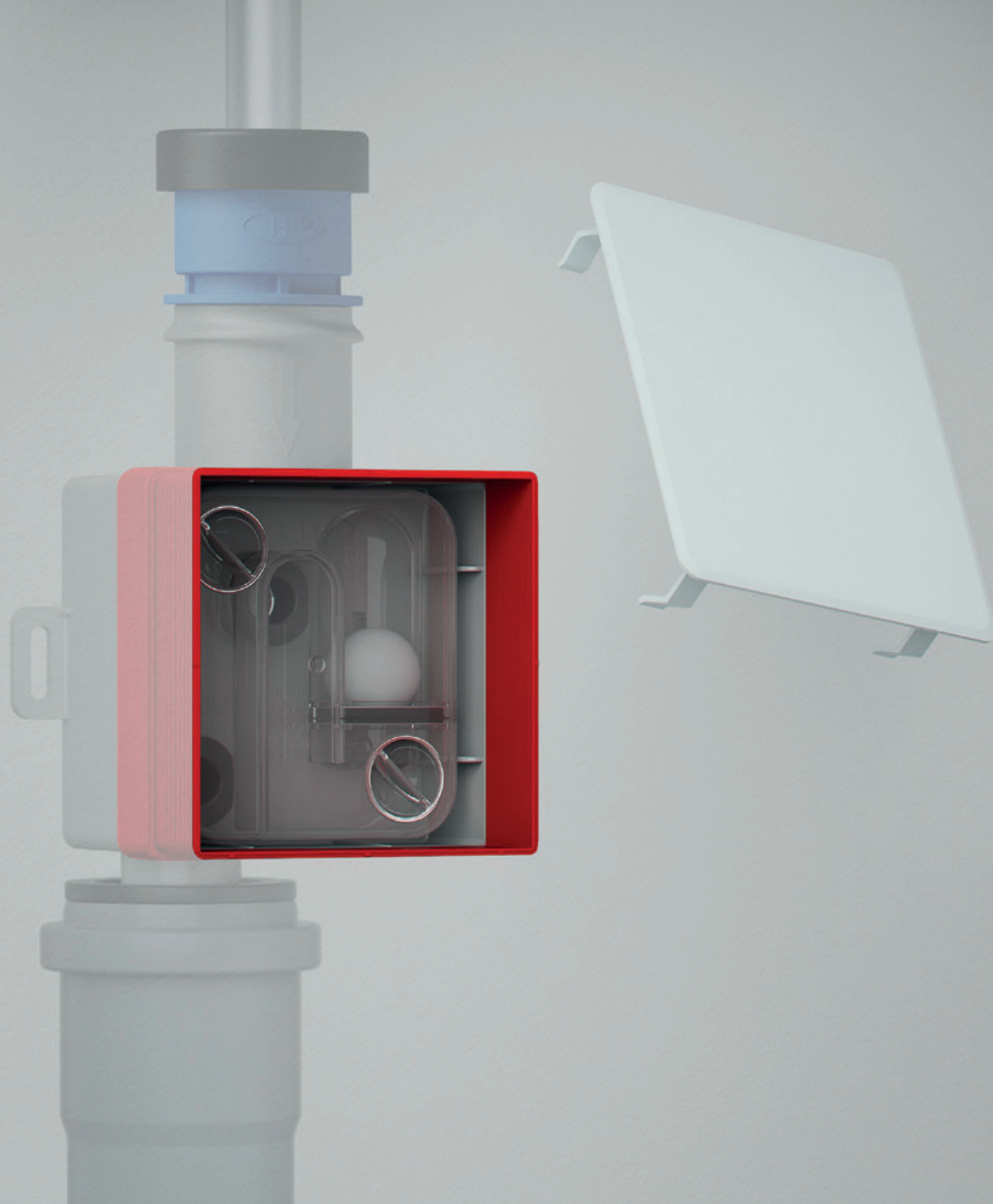
Condensate trap 136



Condensate trap 136.2

Material

Polypropylene, highly impact-resistant



- ① Housing
- ② Trap insert
- ③ Protection box
- ④ Hygiene adapter (accessory)

## Advantages

From drip water to connecting air conditioning devices and condensing boilers – our condensate and condensate traps offer individual solutions for surface-mounting and flush-mounting.

- Installed float valves reliably prevent odours (condensate-type trap 136, 136.3, 138 and condensate trap 21)
- Transparent dip tubes to make it easy to monitor the water level, top up via the connection hose, suitable for excess and low pressure up to 2,800 Pa (Pascal) (condensate-type trap 136.2)
- For assembly in or on the wall (flush / surface). Transparent trap insert with large inspection opening for easy maintenance and cleaning (condensate-type trap 138)

Product information:  
[dallmer.com/traps](https://dallmer.com/traps)





04

Product range

Page 31

# Shower traps ORIO DallBox

## DALLMER shower trap ORIO DallBox

conforming to DIN EN 274

Drain body for standard-compliant installation in floor constructions 80 – 250 mm with bonded waterproofing according to DIN 18534. For easy and safe connection of flat shower trays made of mineral casting and other materials with a outlet of d: 90 mm, which can be installed directly on the sealed screed.

### SPECIFICATION

- elastic Flex element to compensate for lateral differences between the drain body and the outlet of the shower tray by up to 2 cm in any horizontal direction
- flexible, click-in sealing sleeve for secure connection to bonded waterproofing as per DIN 18534
- outlet DN 50 horizontal, with ball-joint, adjustable 0 – 15 degrees
- trap insert, removable for cleaning, 50 mm water seal (conforming to DIN EN 274)
- temporary blanking plate
- installation aid for straightforward and secure connection of the shower tray to the drain set
- three acoustically decoupled mounting feet for fastening and height adjustment of the drain bodies; installation area 0 – 50 mm
- drain body can be cut to length for build-in height 80 – 250 mm
- inspection option to control moisture formation underneath the shower tray at a later date

### MATERIAL

Polypropylene drain body, highly impact-resistant; TPE flex element

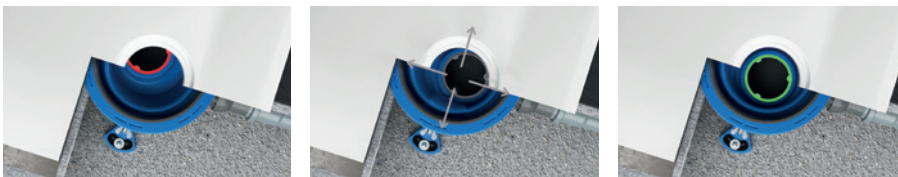
#### FLOW RATE TESTED TO DIN EN 274 (with 15 mm water over grate)

	Required	Dallmer
DN 50	0.4 l/s	0.45 l/s

ITEM	DN	PART NO.
Shower trap ORIO DallBox, raised grid stainless steel	DN 50	161505
Shower trap ORIO DallBox, raised grid ABS chromed	DN 50	161512
Shower trap ORIO DallBox Select, stainless steel matt	DN 50	161529
Shower trap body ORIO DallBox (without cover plate*)	DN 50	161536

\*Compatible with all ORIO cover plates

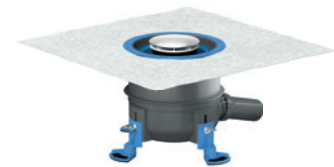
### MEMBRANE FLEXIBILITY



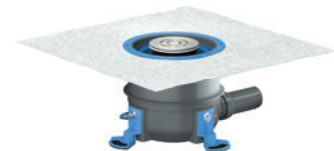
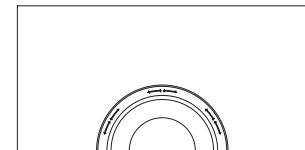
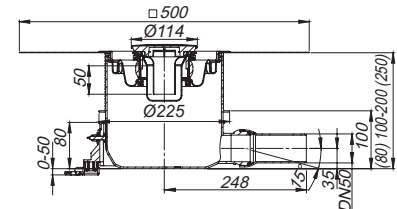
The Flex element offsets deviations at the sides between the drain body and the shower tray by up to 2 cm from the centre in any horizontal direction.



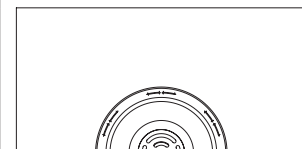
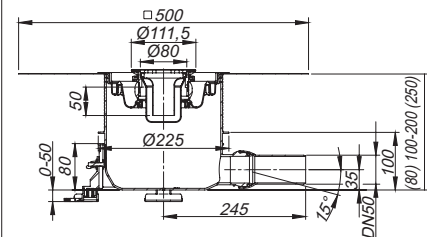
Scan the QR code now and watch our membrane flexibility animation!



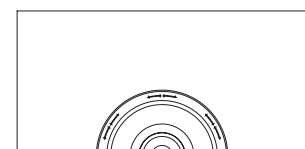
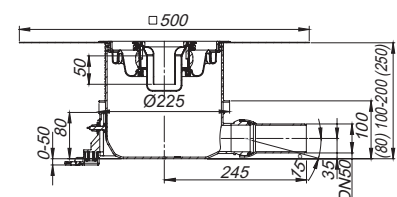
Shower trap ORIO DallBox, raised grid stainless steel



Shower trap ORIO DallBox Select, stainless steel matt



Shower trap body ORIO DallBox\*





# Shower traps

## DALLMER shower trap ORIO

conforming to DIN EN 274  
with build-in height only 85 mm, for shower trays with a 90 mm outlet.

### SPECIFICATION

- outlet DN 50 horizontal, with ball-joint, adjustable 0 – 15 degrees
- trap insert, removable for cleaning, 50 mm water seal (conforming to DIN EN 1253)
- temporary blanking plate/installation key

### MATERIAL

trap polypropylene, raised grid stainless steel, ABS chromed or ABS black matt

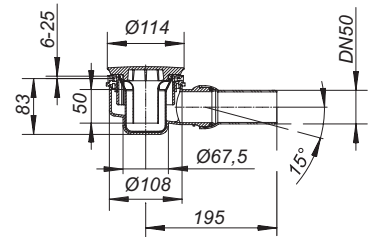
#### FLOW RATE TESTED TO DIN EN 274 (with 15 mm water over grate)

	Required	Dallmer
DN 50	0.4 l/s	0.45 l/s

ITEM	DN	PART NO.
Shower trap ORIO, raised grid stainless steel	DN 50	160119
Shower trap ORIO, raised grid ABS chromed	DN 50	160201
Shower trap ORIO, raised grid ABS black matt	DN 50	161369



Shower trap ORIO



## DALLMER shower trap ORIO 60

extremely low build-in height (60 mm), for shower trays with a 90 mm outlet.

### SPECIFICATION

- outlet DN 40 horizontal, with ball-joint, adjustable 0 – 15 degrees
- trap insert, removable for cleaning, 40 mm water seal (deviating to DIN EN 1253)
- temporary blanking plate/installation key

### MATERIAL

trap polypropylene, raised grid stainless steel or ABS chromed

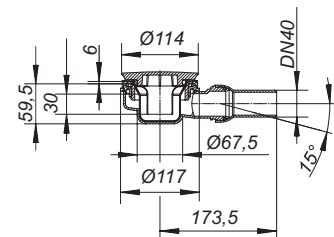
#### FLOW RATE TESTED TO DIN EN 274 (with 15 mm water over grate)

	Required	Dallmer
DN 40	0.4 l/s	0.42 l/s

ITEM	DN	PART NO.
Shower trap ORIO 60, raised grid stainless steel	DN 40	160294
Shower trap ORIO 60, raised grid ABS chromed	DN 40	160324
Shower trap ORIO 60, raised grid ABS black matt	DN 40	161376



Shower trap ORIO 60



# Shower traps

## DALLMER shower trap ORIO Select

conforming to DIN EN 274  
with build-in height only 87 mm, for shower trays with a 90 mm outlet.

### SPECIFICATION

- outlet DN 50 horizontal, with ball-joint, adjustable 0 – 15 degrees
- trap insert, removable for cleaning, 50 mm water seal (conforming to DIN EN 1253)
- temporary blanking plate/installation key

### MATERIAL

trap polypropylene, raised grid stainless steel or ABS chromed  
Design-grate, 5 mm 316L stainless steel, satin finish or mirror polished

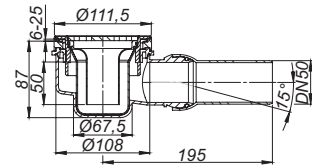
#### FLOW RATE TESTED TO DIN EN 274 (with 15 mm water over grate)

	Required	Dallmer
DN 50	0.4 l/s	0.45 l/s

ITEM	DN	PART NO.
Shower trap ORIO Select, stainless steel satin finish	DN 50	161307
Shower trap ORIO Select, stainless steel mirror polished	DN 50	161314



Shower trap ORIO Select



## DALLMER shower trap ORIO 60 Select

extremely low build-in height (63 mm), for shower trays with a 90 mm outlet.

### SPECIFICATION

- outlet DN 40 horizontal, with ball-joint, adjustable 0 – 15 degrees
- trap insert, removable for cleaning, 40 mm water seal (deviating to DIN EN 1253)
- temporary blanking plate/installation key

### MATERIAL

trap polypropylene, raised grid stainless steel or ABS chromed  
Design-grate, 5 mm 316L stainless steel, satin finish or mirror polished

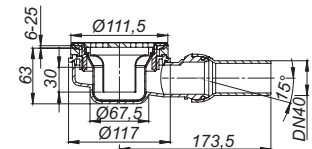
#### FLOW RATE TESTED TO DIN EN 274 (with 15 mm water over grate)

	Required	Dallmer
DN 40	0.4 l/s	0.42 l/s

ITEM	DN	PART NO.
Shower trap ORIO 60 Select, stainless steel satin finish	DN 40	161338
Shower trap ORIO 60 Select, stainless steel mirror polished	DN 40	161345



Shower trap ORIO 60 Select



# Shower traps

## DALLMER shower trap ORIO V Select

conforming to DIN EN 274  
for shower trays with a 90 mm outlet.

### SPECIFICATION


- outlet DN 50 vertical
- trap insert, removable for cleaning, 50 mm water seal (conforming to DIN EN 1253)
- temporary blanking plate/installation key


### MATERIAL

trap polypropylene,  
Design-grate, 5 mm 316L stainless steel, satin finish

#### FLOW RATE TESTED TO DIN EN 274 (with 15 mm water over grate)

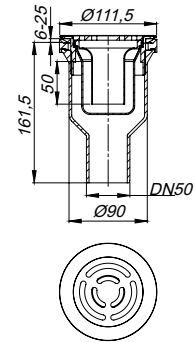
	Required	Dallmer
DN 50	0.4 l/s	0.51 l/s

ITEM	DN	PART NO.
 Shower trap ORIO V Select, vertical, raised grid stainless steel	DN 50	161321

 Fire protection system 3 (Part No. 515032) applicable.



Shower trap ORIO V Select, vertical



## DALLMER shower trap ORIO V

conforming to DIN EN 274  
for shower trays with a 90 mm outlet.

### SPECIFICATION




- outlet DN 50 vertical
- trap insert, removable for cleaning, 50 mm water seal (conforming to DIN EN 1253)
- temporary blanking plate/installation key


### MATERIAL

trap polypropylene, raised grid stainless steel, ABS chromed or ABS black matt

#### FLOW RATE TESTED TO DIN EN 274 (with 15 mm water over grate)

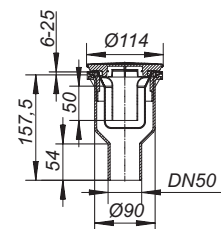
	Required	Dallmer
DN 50	0.4 l/s	0.51 l/s

ITEM	DN	PART NO.
 Shower trap ORIO V, vertical, raised grid stainless steel	DN 50	160218
 Shower trap ORIO V, vertical, raised grid chromed	DN 50	160249
 Shower trap ORIO V, vertical, raised grid black matt	DN 50	161383

 Fire protection system 3 (Part No. 515032) applicable.



Shower trap ORIO V, vertical



# Shower traps

## DALLMER shower trap body ORIO

conforming to DIN EN 274  
with build-in height only 85 mm, for shower trays with a 90 mm outlet.

### SPECIFICATION

- outlet horizontal, ball-joint adjustable 0 – 15 degrees, DN 50, BS 2" sw socket or HDPE 56 mm
- trap insert, removable for cleaning, 50 mm water seal (conforming to DIN EN 1253)
- temporary blanking plate/installation key

### MATERIAL

polypropylene

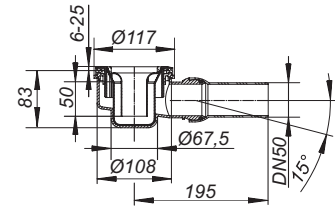
#### FLOW RATE TESTED TO DIN EN 274 (with 15 mm water over grate)

	Required	Dallmer
DN 50	0.4 l/s	0.45 l/s

ITEM	PART NO. DN 50	PART NO. BS 2"
Shower trap body ORIO	160010	161277



Shower trap body ORIO



## DALLMER shower trap body ORIO 60

extremely low build-in height (60 mm), for shower trays with a 90 mm outlet.

### SPECIFICATION

- outlet DN 40 horizontal, with ball-joint, adjustable 0 – 15 degrees
- trap insert, removable for cleaning, 40 mm water seal (deviating to DIN EN 1253)
- temporary blanking plate/installation key

### MATERIAL

polypropylene

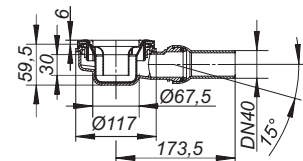
#### FLOW RATE TESTED TO DIN EN 274 (with 15 mm water over grate)

	Required	Dallmer
DN 40	0.4 l/s	0.42 l/s

ITEM	DN	PART NO.
Shower trap body ORIO 60	DN 40	160355



Shower trap body ORIO 60



# Shower traps

## DALLMER shower trap body ORIO V

conforming to DIN EN 274  
for shower trays with a 90 mm outlet.

### SPECIFICATION


- outlet DN 50 vertical
- trap insert, removable for cleaning, 50 mm water seal (conforming to DIN EN 1253)
- temporary blanking plate/installation key


### MATERIAL

polypropylene

#### FLOW RATE TESTED TO DIN EN 274 (with 15 mm water over grate)

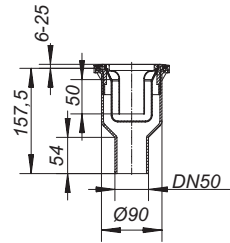
	Required	Dallmer
DN 50	0.4 l/s	0.51 l/s

ITEM	DN	PART NO.
 Shower trap body ORIO V	DN 50	160027

 Fire protection system 3 (Part No. 515032) applicable.



Shower trap body ORIO V



## DALLMER raised grid ORIO

ABS, with choice of finish: stainless steel, chromed or white.

ITEM	PART NO.
Raised grid ORIO, stainless steel	160706
Raised grid ORIO, ABS chromed	160812
Raised grid ORIO, ABS white	160829
Raised grid ORIO, ABS, black matt	161390
Raised grid ORIO, ABS, white matt	161475
Raised grid ORIO, ABS chromed, manufactured 2004 – May 2010	162809
Raised grid ORIO, ABS white, manufactured 2004 – May 2010	162830

Other colours on request.



Raised grid ORIO, stainless steel



# Washing machine/dishwasher trap

## The classic: HL 400 washing machine/dishwasher trap

- ▶ compact recess – small, smooth-flowing trap body with cleaning eye
- ▶ variable installation depth – threaded inlet cut to length on site, from 60 – 110 mm
- ▶ a perfect finish every time – the patented red spacer can be cut to exactly the right depth for the chosen wall finish
- ▶ secure connection – the hose adaptor is secured to the threaded inlet, with an O-ring for perfect sealing
- ▶ highly versatile – can be used with a variety of installation systems
- ▶ quick connection – pipework connected with a socket or welded to HD-PE
- ▶ meets Standards – DIN EN 274/DIN 19541 approved



### DALLMER washing machine or dishwasher trap HL 400

#### SPECIFICATION

- compact recessed body
- cleaning eye
- adjustable depth threaded inlet
- angled hose connector
- stainless steel cover plate, 120 x 166 mm
- recess depth 60 – 110 mm
- spacer

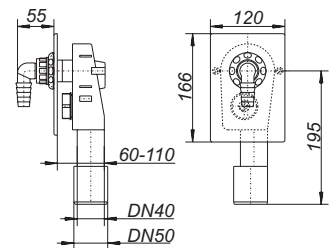
#### MATERIAL

polyethylene trap-body for welding HDPE

ITEM	DN	PART NO.
Washing machine or dishwasher trap HL 400	DN 40/DN 50	130402



Washing machine or dishwasher trap HL 400



Cover plates and on/off valves can be colour-coated to customers choice.

# Washing machine/dishwasher trap

## DALLMER washing machine dishwasher trap HL 400 E

### SPECIFICATION

- compact recessed body
- adjustable depth threaded inlet
- inlet hose connector, chrome
- backing plate
- original Leifeld fixing bracket
- incorporating power socket with hinged cover, chrome
- cover plate stainless steel, 100 x 200 mm
- recess depth 73 – 120 mm
- spacer
- blanking plug

### MATERIAL

polyethylene trap-body for welding HDPE

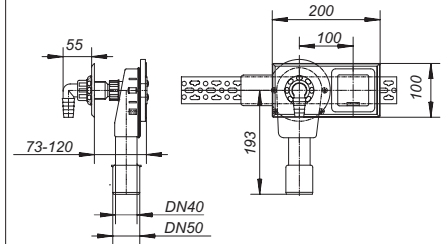
### TESTED BY

VDE (electrical connection)

ITEM	DN	PART NO.
Washing machine or dishwasher trap HL 400 E	DN 40/DN 50	130419



Washing machine or dishwasher trap HL 400 E



## DALLMER washing machine or dishwasher trap type 406 E

### SPECIFICATION

- compact recessed body
- backing plate
- original Leifeld fixing bracket
- gunmetal wall plate elbow
- original 1/2" SCHELL on/off valve COMFORT with backflow preventer and air admittance valve
- inlet hose connector, chrome
- cover plate stainless steel 280 x 100 mm
- recess depth 73 – 120 mm
- spacer
- incorporating power socket with hinged cover, chrome
- blanking plug

### MATERIAL

polyethylene trap-body for welding HDPE

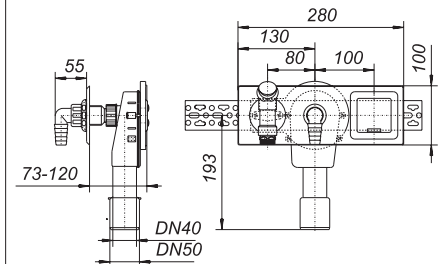
### TESTED BY

DVGW (on/off valve), VDE (electrical connection)

ITEM	DN	PART NO.
Washing machine or dishwasher trap type 406 E	DN 40/DN 50	130617



Washing machine or dishwasher trap type 406 E



# Washing machine/dishwasher trap

## DALLMER washing machine or dishwasher trap type 406

### SPECIFICATION

- compact recessed body
- backing plate
- original Leifeld fixing bracket
- gunmetal wall plate elbow
- original 1/2" SCHELL on/off valve COMFORT with backflow preventer and air admittance valve
- inlet hose connector, chrome
- recess depth 73 – 120 mm
- spacer
- blanking plug

### MATERIAL

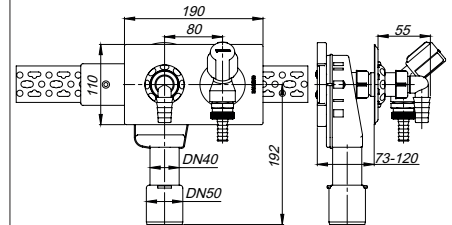
polyethylene trap-body for welding HDPE

### TESTED BY

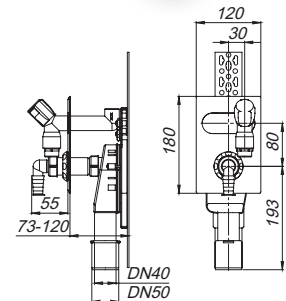
DVGW (on/off valve)

- ▶ **washing machine or dishwasher trap type 406**  
for horizontal installation, cover plate stainless steel 190 x 110 mm
- ▶ **washing machine or dishwasher trap type 406 vertical**  
for vertical installation, cover plate ABS chromed, 120 x 180 mm
- ▶ **washing machine or dishwasher trap type 406 vertical, long**  
for vertical installation, cover plate ABS chromed, 120 x 180 mm, with comfort shut-off valve
- ▶ **washing machine or dishwasher trap type 406.2**  
for horizontal installation, with 2 on/off valves e.g. hot and cold feeds,  
cover plate stainless steel, 280 x 100 mm

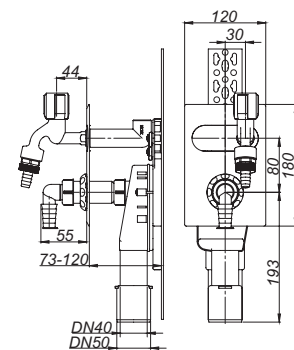
ITEM	DN	PART NO.
Washing machine or dishwasher trap type 406	DN 40/DN 50	130600
Washing machine or dishwasher trap type 406 vertical	DN 40/DN 50	130648
Washing machine or dishwasher trap type 406 vertical, long	DN 40/DN 50	130730
Washing machine or dishwasher trap type 406.2	DN 40/DN 50	130709



Washing machine or dishwasher trap type 406



Washing machine or dishwasher trap type 406 vertical



Washing machine or dishwasher trap type 406 vertical, long



# Washing machine/dishwasher trap

## DALLMER washing machine or dishwasher trap type 405

### SPECIFICATION

- compact recessed body
- backing plate
- original Leifeld fixing bracket
- gunmetal wall plate elbow
- inlet hose connector, chrome
- separate 1/2" on/off valve with back flow preventor, air-admittance valve and escutcheon
- cover plate stainless steel 190 x 110 mm
- recess depth 73 – 120 mm
- spacer
- blanking plug

### MATERIAL

polyethylene trap-body for welding HDPE

ITEM	DN	PART NO.
Washing machine or dishwasher trap type 405	DN 40/DN 50	130501

## DALLMER washing machine or dishwasher trap type 405 E

### SPECIFICATION

- compact recessed body
- backing plate
- original Leifeld fixing bracket
- gunmetal wall plate elbow
- inlet hose connector, chrome
- separate 1/2" on/off valve with back flow preventor, air-admittance valve and escutcheon
- cover plate stainless steel 280 x 100 mm
- recess depth 73 – 120 mm
- spacer
- incorporating power socket with hinged cover, chrome
- blanking plug

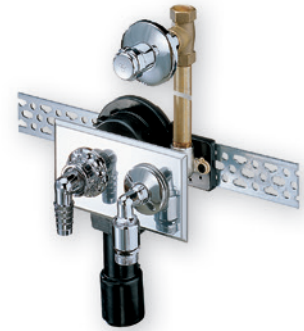
### MATERIAL

polyethylene trap-body for welding HDPE.

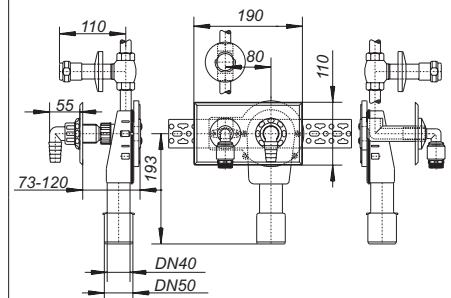
### TESTED BY

DVGW (on/off valve), VDE (electrical connection)

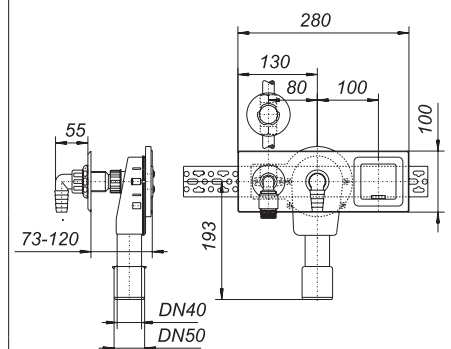
ITEM	DN	PART NO.
Washing machine or dishwasher trap type 405 E	DN 40/DN 50	130518



Washing machine or dishwasher trap type 405



Washing machine or dishwasher trap type 405 E



# Washing machine/dishwasher trap

**DALLMER installation kit washing machine trap 400 Vario**  
housing for wall recessing

**SPECIFICATION**

- recess depth 75 – 115 mm
- spacer

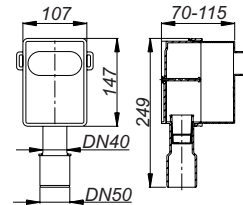
**MATERIAL**

polyethylene for welding HDPE

ITEM	DN	PART NO.
Installation kit dishwasher trap 400 Vario	DN 40/DN 50	140401



Installation kit dishwasher trap 400 Vario



**DALLMER connection kit dishwasher trap 400 Vario.1**  
for installation kit dishwasher trap 400 Vario

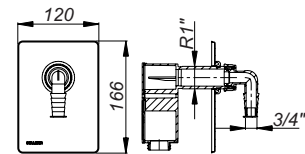
**SPECIFICATION**

- compact recessed body
- adjustable depth threaded inlet
- angled hose connector
- stainless steel cover plate, 120 x 166 mm

ITEM	PART NO.
Installation kit dishwasher trap 400 Vario.1	140418



Installation kit dishwasher trap 400 Vario.1



**DALLMER connection kit washing machine trap 400 Vario.2**  
for installation kit dishwasher trap 400 Vario

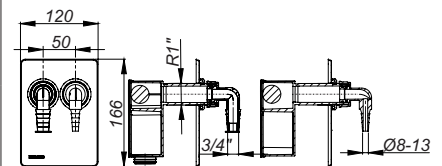
**SPECIFICATION**

- compact recessed body
- two adjustable depth threaded inlets
- angled hose connectors for connection of two washing machines or one washing machine and one dryer
- stainless steel cover plate, 120 x 166 mm

ITEM	PART NO.
Connection kit dishwasher trap 400 Vario.2	140425



Connection kit dishwasher trap 400 Vario.2



# Space-saving traps

## DALLMER trap type 137

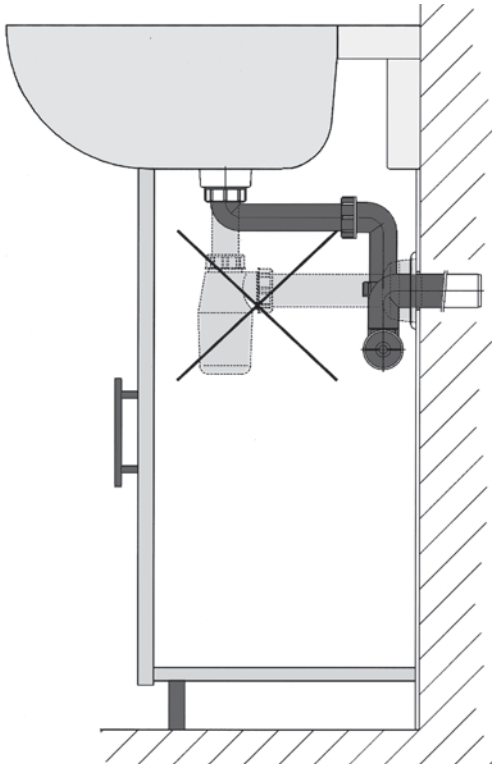
conforming to DIN EN 274  
space-saving trap used under wash-basins, in vanity units etc.

### SPECIFICATION

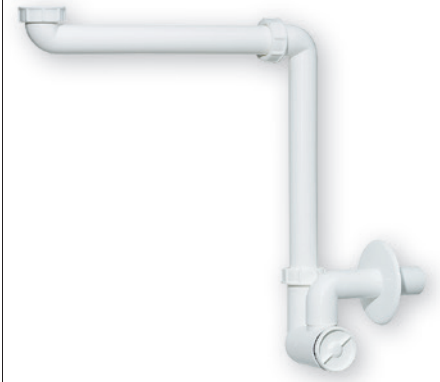
- three-way adjustment
- cleaning eye/tray
- escutcheon

### MATERIAL

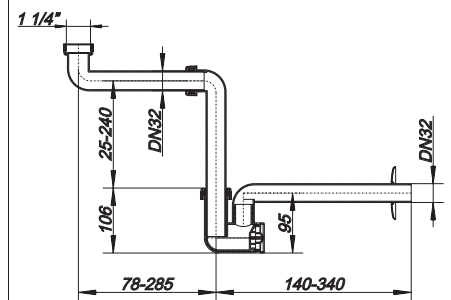
polypropylene, highly impact-resistant



Compared with a standard trap



Trap type 137



ITEM	DIMENSION	PART NO.
Trap type 137	1 1/4" x DN 32	051103
Trap type 137	1 1/4" x DN 40	051110

## DALLMER threaded extension

for use in pipes without pressure, especially for the space-saving siphon connection of countertop wash-basins together with the wash-basin trap type 137. Internal thread x external thread.

### SPECIFICATION

- back nut and flat seal 1 1/4"

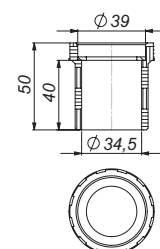
### MATERIAL

polypropylene, highly impact-resistant

ITEM	DIMENSION	PART NO.
Threaded extension	1 1/4" x 1 1/4"	090232



Threaded extension



# Concealed washing machine/dishwasher traps

## DALLMER concealed trap type 300

conforming to DIN 19541

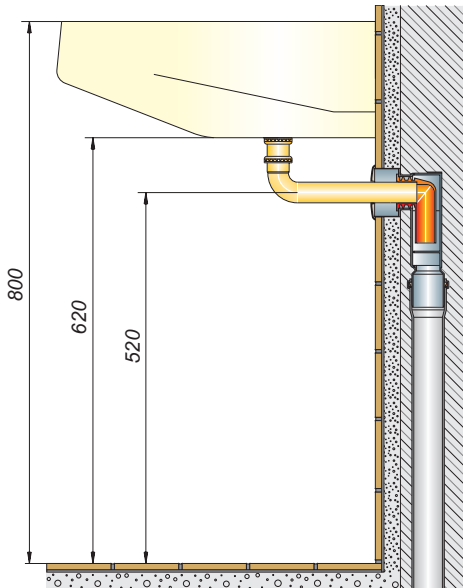
### SPECIFICATION

- space saving built-in trap body
- height adjustable inlet
- escutcheon
- removable trap insert

### MATERIAL

trap in polypropylene

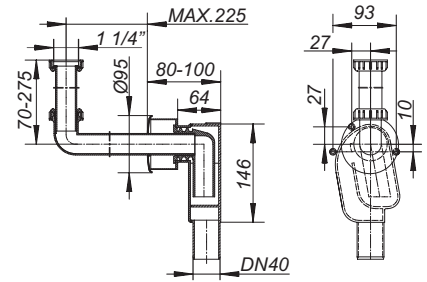
- ▶ **concealed trap type 300 KS**  
inlet white polypropylene, escutcheon white ABS
- ▶ **concealed trap type 300 CR**  
inlet c.p. brass, escutcheon stainless steel



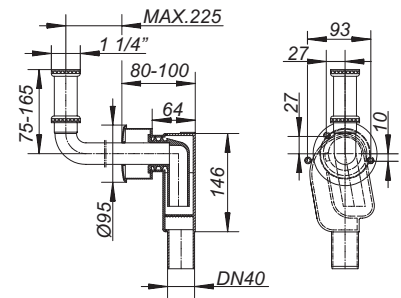
ITEM	DIMENSION	PART NO.
Concealed trap type 300 KS	1 1/4" x DN 40	130235
Concealed trap type 300 KS	1 1/4" x DN 50	130242
Concealed trap type 300 CR	1 1/4" x DN 40	130211
Concealed trap type 300 CR	1 1/4" x DN 50	130228



Concealed trap type 300 KS



Concealed trap type 300 CR



# Concealed washing machine/dishwasher traps

## DALLMER concealed trap type 310

conforming to DIN 19541

### SPECIFICATION

- space saving built-in trap body
- sound-absorbing backing plate
- fixing bracket
- 2 brass elbows for water supply
- height adjustable inlet
- escutcheon
- removable trap insert

### MATERIAL

trap in polypropylene

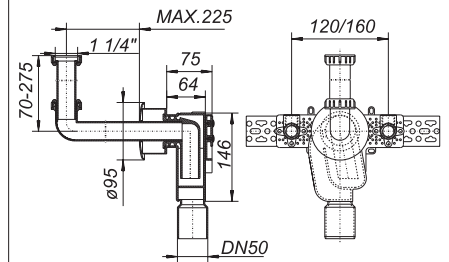
- ▶ **concealed trap type 310 KS**  
inlet white polypropylene, escutcheon white ABS
- ▶ **concealed trap type 310 CR**  
inlet c.p. brass, escutcheon stainless steel

ITEM	DIMENSION	PART NO.
Concealed trap type 310 KS	1 1/4" x DN 50	130334
Concealed trap type 310 CR	1 1/4" x DN 50	130327

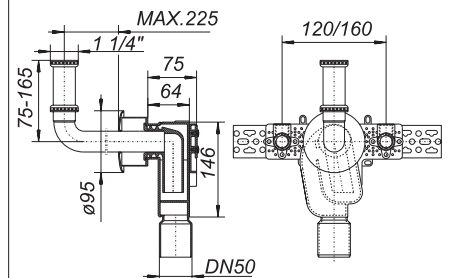
If installed with only sound insulated contact against the building structure, the requirements of all classes of sound proofing confirming to DIN 4109.10, table 1 and 2 are fulfilled.



Concealed trap type 310 KS



Concealed trap type 310 CR



# Concealed washing machine/dishwasher traps

## DALLMER concealed trap type 300 PC

conforming to DIN 19541  
for hospital wash basins (e.g. ,Paracelus“).

### SPECIFICATION

- space saving built-in trap body
- height adjustable inlet
- escutcheon
- waste
- c.p. standpipe
- removable trap insert

### MATERIAL

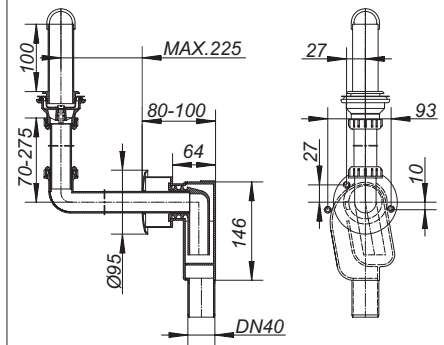
trap in polypropylene

- ▶ **concealed trap type 300 PC KS**  
inlet white polypropylene, escutcheon white ABS
- ▶ **concealed trap type 300 PC CR**  
inlet c.p. brass, escutcheon stainless steel

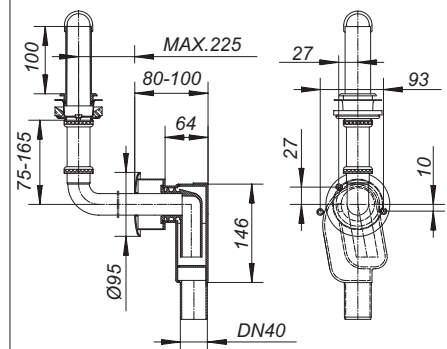
ITEM	DN	PART NO.
Concealed trap type 300 PC KS	DN 40	130273
Concealed trap type 300 PC KS	DN 50	130280
Concealed trap type 300 PC CR	DN 40	130297
Concealed trap type 300 PC CR	DN 50	130303



Concealed trap type 300 PC KS



Concealed trap type 300 PC CR



# Condensate/air-conditioner traps

## DALLMER condensate trap type 113

conforming to DIN EN 274

### SPECIFICATION

- height adjustable tundish and pipe clamp
- adjustable ball-joint outlet
- escutcheon

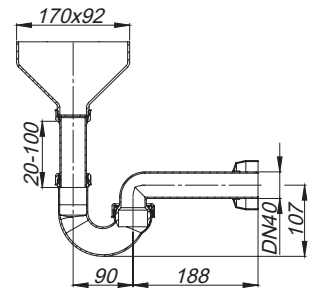
### MATERIAL

polypropylene

ITEM	DN	PART NO.
Condensate trap type 113	DN 40	030313
Condensate trap type 113	DN 50	030320



Condensate trap type 113



## DALLMER condensate tundish type 013

### SPECIFICATION

- 1 1/2" male thread DN 40 tube with 1 1/2" back nut clip
- tundish

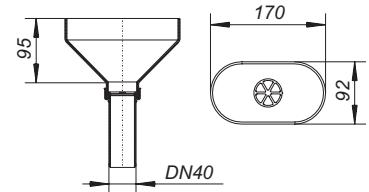
### MATERIAL

polypropylene

ITEM	DN	PART NO.
Condensate tundish type 013	DN 40	080325



Condensate tundish type 013



## DALLMER condensate trap type 21

rising ball seals the trap if the water level is low

### SPECIFICATION

- outlet DN 32

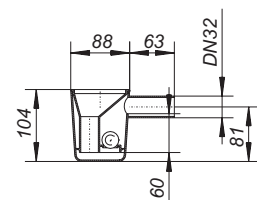
### MATERIAL

polypropylene

ITEM	DN	PART NO.
Condensate trap type 21	DN 32	030306



Condensate trap type 21



# Condensate/air-conditioner traps

## DALLMER built-in condensate trap type 138

for use with air-conditioners, heating equipment, etc.  
The floating ball keeps the trap seal intact!

### SPECIFICATION

- housing
- inspection cover

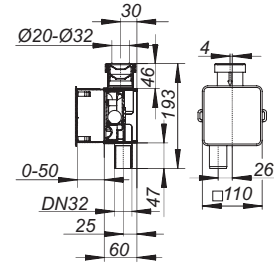
### MATERIAL

polypropylene/ABS

ITEM	DN	PART NO.
Built-in condensate trap 138	DN 32	026200
Hygiene connection adapter	d: 20 – 32 mm	026019



Built-in condensate trap 138



## DALLMER condensate trap type 136

for the installation of air-conditioners, heating equipment, etc.  
The built-in ball valve seals the trap in case of water deficiency; swivel joints for flexible mounting!

### SPECIFICATION

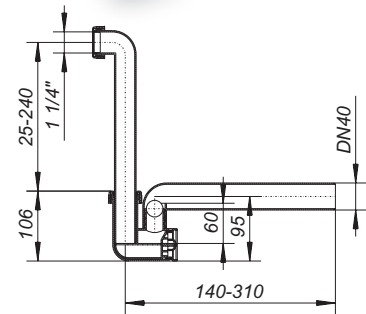
- cleaning eye/tray

### MATERIAL

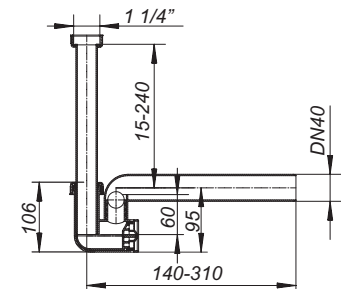
polypropylene

- ▶ condensate trap type 136  
inlet tube with back nut 1 1/4" horizontal
- ▶ condensate trap type 136.3  
with inlet tube with back nut 1 1/4" vertical

ITEM	DIMENSION	PART NO.
Condensate trap type 136	1 1/4" x DN 40	026118
Condensate trap type 136.3	1 1/4" x DN 40	026224



Condensate trap type 136



Condensate trap type 136.3



# Condensate/air-conditioner traps

## DALLMER condensate trap type 136.2

conforming to DIN 19541

for the installation of air-conditioners, heating equipment, etc. Suitable for positive and negative pressure up to 2800 Pa (Pascal), transparent inlet tube, in case of water deficiency, may be filled through the hose connector.

### SPECIFICATION

- swivel joints for flexible mounting
- hose connector with anti-reflux valve

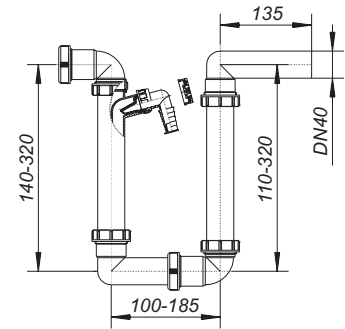
### MATERIAL

polypropylene

ITEM	DIMENSION	PART NO.
Condensate trap type 136.2	1 1/2" x DN 40	026217



Condensate trap type 136.2





Cleaning

Page 51

# 05

# The simplest form of cleaning

The drainage system  
for perfect hygiene

- The trap can be completely removed for easy and thorough cleaning
- Easy and direct access to the drain area
- Flawless hygiene thanks to premium stainless steel and cleaning-agent-resistant plastics
- The fitting is cleaned using just a mild, common household cleaning agent (e.g. washing-up liquid) and a damp cloth





ORIO DallBox  
Black satin

# Service

Our products at a glance

Help for planning and installation

Discover our diverse drainage systems and get an overview of our product categories on our website [dallmer.com](http://dallmer.com)

Planners, architects and installation technicians can visit [dallmer.com/service](http://dallmer.com/service) for useful tools and documents which provide them with support during the entire process, from planning to installation.



Installation instructions



DXF drawings



Data sheets



BIM – building information modelling



System sections



Configurator

The Dallmer Sessions online. video. live.



If you are abreast of the state-of-the-art of drainage technologies, changes to standards and directives, and current bathroom trends, you have a clear advantage which you can pass on to your customers. Dallmer's training opportunities now make it even easier to keep up to date.

For more information and current scheduled events, visit [dallmer.com/sessions](http://dallmer.com/sessions)

10-year warranty\*

A promise which we are happy for you to pass on to your customers.

DallmerVideos [dallmer.official](https://www.facebook.com/dallmer.official) [dallmer\\_official](https://www.instagram.com/dallmer_official) [dallmer\\_official](https://www.pinterest.com/dallmer_official)

\*Warranty conditions from January 2013: Republic of Ireland and United Kingdom excluded.



Dallmer GmbH + Co. KG  
Wiebelsheidestraße 25  
59757 Arnsberg  
Germany

T +49 2932 9616-0  
F +49 2932 9616-222  
E [info@dallmer.de](mailto:info@dallmer.de)  
W [dallmer.com](http://dallmer.com)

DW20073 / 10/2023\_PDF  
WEEE-Reg.-Nr. DE 98946358